

This leaflet is designed to help you remember the animated activities described on the BEAM CD-ROM. It can be used in conjunction with the BEAM DVD/video when running your BEAM group.

By following the full instructions and advice on identifying movement difficulties explained in the BEAM CD-ROM, your children will get the most out of BEAM. To ensure correct usage, always implement the BEAM Protocol.



Movement Towards Learning for
Reception Aged Children



All rights reserved. The BEAM Programme is published by:
Maidstone Weald Primary Care Trust
Preston Hall, Aylesford, Kent ME20 7NJ

BEAM



Movement
Towards
Learning for
Reception
Aged Children

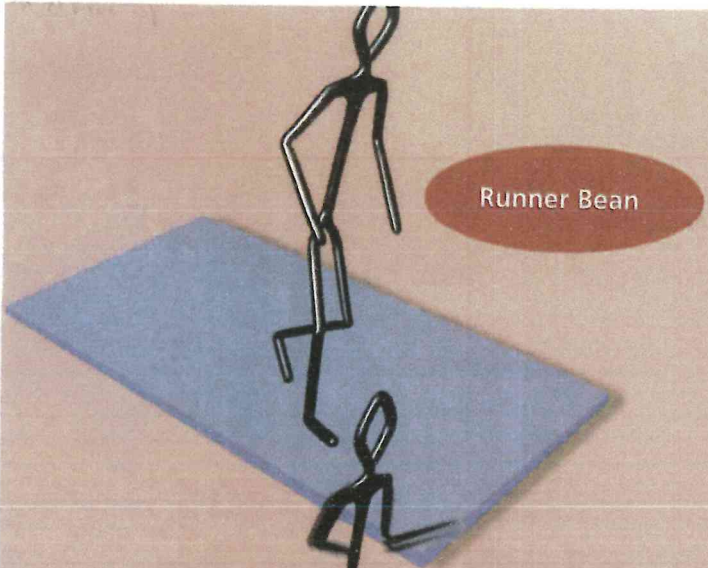
WARM UP



Activities Leaflet

BEAM

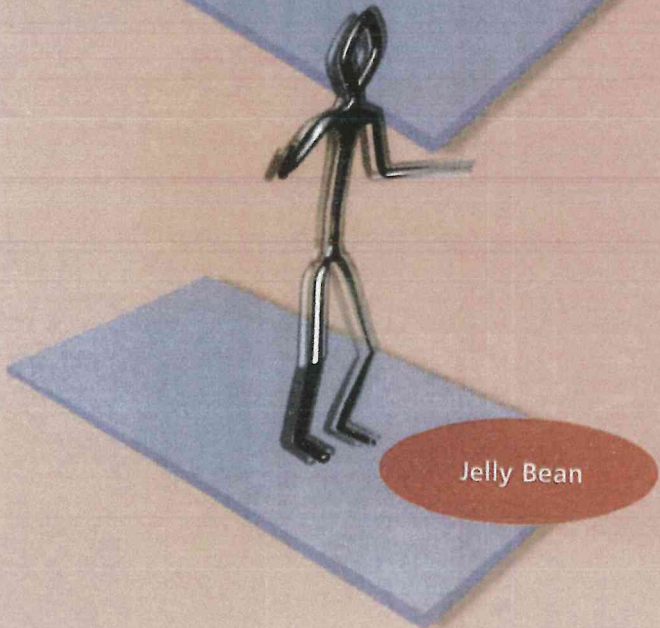
Runner Bean



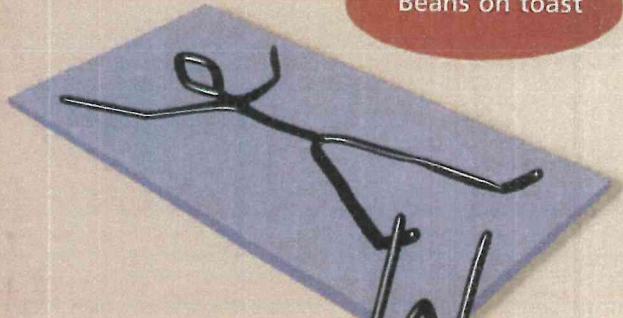
Chilli Bean



Jelly Bean



Beans on toast



String Bean



Jumping Bean



Broad Bean



French Bean



Frozen Bean

